



Cremation Package Services

A guide of our service packages, merchandise and memorial items

ORileyBranson.com

Family Gathering

An informal identification takes place in a private setting and allows the opportunity to say goodbye. Limited viewing time.

Package Includes:

- * Professional service of funeral director & staff
- * Private Family viewing
- * Transfer of the remains to the funeral chapel
- * Crematory fee
- * Memorial urn, back page

(There will be an additional charge of \$252.50 for the use of a funeral coach on any church services.)

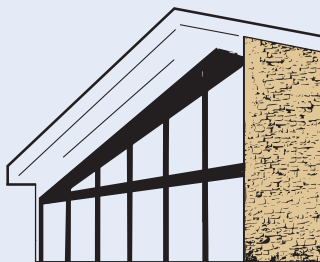
Package Offerings*

\$3,918 to \$4,239

(No deletions to Package offered)

Cash advance items not included

****NOTE:** A general price list with individual pricing for all products and services is available. 2-10-2025

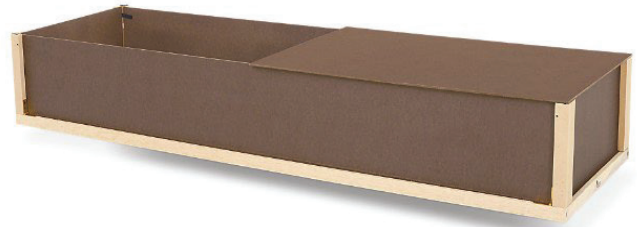


Family Gathering

Commemoration Package:

- * Includes The Standard Brown Alternative Container
- * Constructed of Wood Composite-Dark
- * Minimal ivory crepe mini pillow and mattress
- * Choice of basic urn

Total: \$4,190
Tax: \$49
Net: **\$4,239***



Tribute Package:

- * Includes the Trayview Alternative Container
- * Constructed of Cardboard-Solid color-Dark
- * Minimal ivory crepe mini pillow and mattress
- * Choice of basic urn

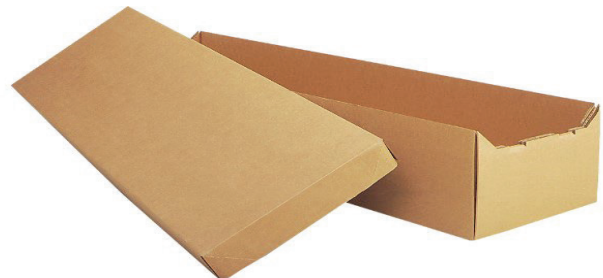
Total: \$4,090
Tax: \$42
Net: **\$4,132***



Simple Package:

- * Includes the Minimum Cardboard Alternative Container
- * Constructed of Cardboard-Light
- * No interior, no mattress, no pillow
- * Choice of basic urn

Total: \$3,890
Tax: \$28
Net: **\$3,918***



Basic Urn: Allowance \$200



Spartan Basic



Hudson Blue



Natural Veneer

Traditional Same Day Visitation & Funeral Service

A personalized life commemoration with both a set visitation time and planned ceremonial events.

Package Includes:

- * Professional service of funeral director & staff
- * Use of facilities and staff for the funeral ceremony
- * Use of facilities and staff for a visitation
- * Life Celebration® Memorial Package
- * Transfer of the remains to the funeral chapel
- * Embalming and care of deceased
- * Cosmetizing, dressing & Casketing of the remains
- * Crematory fee
- * Cremation casket/container, back page
- * Memorial urn, many personalized, back page

(There will be an additional charge of \$252.50 for the use of a funeral coach on any church services.)

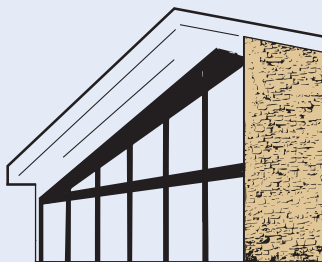
Package Offerings*

\$9,079.40 to \$9,935.40

(No deletions to Package offered)

Cash advance items not included

****NOTE:** A general price list with individual pricing for all products and services is available. 2-10-2025



Traditional Same Day Visitation & Funeral Service

Commemoration Package:

- * Includes Longley Cherry Casket
- * Constructed of Hardwood-Medium
- * Rosetan crepe/lace Interior
- * Choice of memorial urn, many personalized

Total: \$9,710.00
Tax: \$225.40
Net: **\$9,935.40 ***



Tribute Package:

- * Includes Cherry Rental Casket
- * Constructed of Cherry Exterior-Dark; Int Min Alt ContLight
- * Champagne Velvet
- * Choice of memorial urn, many personalized

Total: \$9,110.00
Tax: \$169.40
Net: **\$9,279.40 ***



Simple Package:

- * Includes Oak Rental Casket
- * Constructed of Oak Exterior- Dark; Int Min Alt ContLight
- * Rosetan crepe
- * Choice of memorial urn, many personalized

Total: \$8,910.00
Tax: \$169.40
Net: **\$9,079.40 ***



Basic Urn: Allowance \$600



**Corbett Mantle
Clock**



**Veteran Flag
Panel**



**Walnut Memory
Box**



Cirrus White



**Expression Photo
4x6 Urn**



**Amphora
Violet**

Traditional Two Day Visitation & Funeral Service

A personalized life commemoration with both a set visitation time and planned ceremonial events.

Package Includes:

- * Professional service of funeral director & staff
- * Use of facilities and staff for the funeral ceremony
- * Use of facilities and staff for an evening visitation
- * Life Celebration® Memorial Package
- * Transfer of the remains to the funeral chapel
- * Embalming and care of deceased
- * Cosmetizing, dressing & Casketing of the remains
- * Crematory fee
- * Cremation casket/container, back page
- * Memorial urn, many personalized, back page

(There will be an additional charge of \$252.50 for the use of a funeral coach on any church services.)

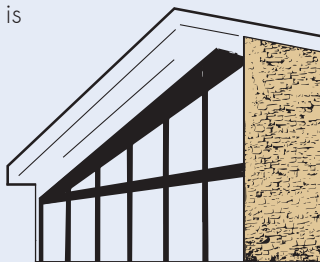
Package Offerings*

\$9,079.40 to \$9,935.40

(No deletions to Package offered)

Cash advance items not included

**NOTE: A general price list with individual pricing for all products and services is available. 2-10-2025



Traditional Two Day Visitation & Funeral Service

Commemoration Package:

- * Includes Longley Cherry Casket
- * Constructed of Hardwood-Medium
- * Rosetan crepe/lace Interior
- * Choice of memorial urn, many personalized

Total: \$9,710.00
Tax: \$225.40
Net: **\$9,935.40 ***



Tribute Package:

- * Includes Cherry Rental Casket
- * Constructed of Cherry Exterior-Dark;
Int Min Alt ContLight
- * Champagne Velvet
- * Choice of memorial urn, many personalized

Total: \$9,110.00
Tax: \$169.40
Net: **\$9,279.40 ***



Simple Package:

- * Includes Oak Rental Casket
- * Constructed of Oak Exterior- Dark;
Int Min Alt ContLight
- * Rosetan crepe
- * Choice of memorial urn, many personalized

Total: \$8,910.00
Tax: \$169.40
Net: **\$9,079.40 ***



Basic Urn: Allowance \$600



**Corbett Mantle
Clock**



**Veteran Flag
Panel**



**Walnut Memory
Box**



Cirrus White



**Expression Photo
4x6 Urn**



**Amphora
Violet**

Memorial Ceremony - Same Day Visitation & Ceremony

A set time for family and friends to visit, share memories and show support.

Package Includes:

- * Professional service of funeral director & staff
- * Use of facilities and staff for same day visitation and memorial ceremony
- * Private family identification
- * Life Celebrations® Memorial Package
- * Transfer of the remains to the funeral chapel
- * Crematory fee
- * Cremation casket/container, back page
- * Memorial urn, many personalized, back page

(There will be an additional charge of \$252.50 for the use of a funeral coach on any church services.)

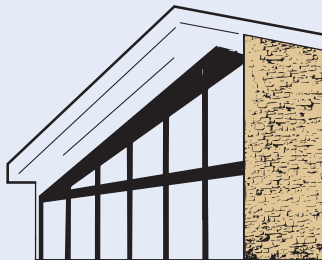
Package Offerings*

\$6,410.75 to \$6,731.75

(No deletions to Package offered)

Cash advance items not included

**NOTE: A general price list with individual pricing for all products and services is available. 2-10-2025



Memorial Ceremony - Same Day Visitation & Ceremony

Commemoration Package:

- * Includes The Standard Brown Alternative Container
- * Constructed of Wood Composite-Dark
- * Minimal ivory crepe mini pillow and mattress
- * Choice of memorial urn

Total: \$6,625.00
Tax: \$106.75
Net: **\$6,731.75 ***



Tribute Package:

- * Includes the Trayview Alternative Container
- * Constructed of Cardboard-Solid color-Dark
- * Minimal ivory crepe mini pillow and mattress
- * Choice of memorial urn

Total: \$6,525.00
Tax: \$99.75
Net: **\$6,624.75 ***



Simple Package:

- * Includes the Minimum Cardboard Alternative Container
- * Constructed of Cardboard-Light
- * No interior, no mattress, no pillow
- * Choice of memorial urn

Total: \$6,325.00
Tax: \$85.75
Net: **\$6,410.75 ***



Basic Urn: Allowance \$400



Bailey Burlwood



In Flight



Magnolia Songbird



Milano Floral



Kenzy Navy



Paramount

Memorial Ceremony - Two Day Visitation & Ceremony

A set time for family and friends to visit, share memories and show support.

Package Includes:

- * Professional service of funeral director & staff
- * Use of facilities and staff for memorial ceremony
- * Use of facilities and staff for an evening visitation
- * Private family identification
- * Life Celebrations® Memorial Package
- * Transfer of the remains to the funeral chapel
- * Crematory fee
- * Cremation casket/container, back page
- * Memorial urn, many personalized, back page

(There will be an additional charge of \$252.50 for the use of a funeral coach on any church services.)

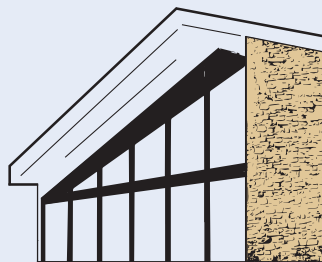
Package Offerings*

\$6,410.75 to \$6,731.75

(No deletions to Package offered)

Cash advance items not included

****NOTE:** A general price list with individual pricing for all products and services is available. 2-10-2025



Memorial Ceremony - Two Day Visitation & Ceremony

Commemoration Package:

- * Includes The Standard Brown Alternative Container
- * Constructed of Wood Composite-Dark
- * Minimal ivory crepe mini pillow and mattress
- * Choice of memorial urn

Total: \$6,625.00
Tax: \$106.75
Net: **\$6,731.75 ***



Tribute Package:

- * Includes the Trayview Alternative Container
- * Constructed of Cardboard-Solid color-Dark
- * Minimal ivory crepe mini pillow and mattress
- * Choice of memorial urn

Total: \$6,525.00
Tax: \$99.75
Net: **\$6,624.75 ***



Simple Package:

- * Includes the Minimum Cardboard Alternative Container
- * Constructed of Cardboard-Light
- * No interior, no mattress, no pillow
- * Choice of memorial urn

Total: \$6,325.00
Tax: \$85.75
Net: **\$6,410.75 ***



Basic Urn: Allowance \$400



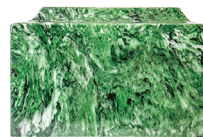
**Seaside Glass
Memory Chest**



Barnwood



Java Black



Kenzy Emerald



Metamorphosis



**Grecian
Crimson**



The History of O'Riley - Branson Funeral Service & Crematory

We at O'Riley – Branson Funeral Service & Crematory have been proudly serving families with both dignity and compassion since 1971. Our main objective is to carry out your wishes down to the smallest detail, so that you may celebrate the life and memory of your loved one. We understand the many different emotions that accompany the loss of someone close to you, having dealt with the loss of family and friends ourselves. We are dedicated to making your arrangements with the same respect as we would our own.



**Chris and Mary Beth
Branson**

Founded in 1971 as Daniel F. O'Riley Funeral Home, O'Riley – Branson Funeral Service & Crematory has remained a family-owned business dedicated to serving the community with compassionate care.

Daniel F. O'Riley, raised in a faith-centered Illinois family, pursued mortuary science before serving in the U.S. Army. After returning to Indiana, he worked in funeral service and education before realizing his dream of opening his own funeral home. With support from his wife, Denni, and his brothers, Dan opened the funeral home in 1971, where he served as director and Denni as office manager.

Over the years, family remained central to O'Riley, with son-in-law Shawn Gudat joining in 1981. After Denni's passing that same year, other family members stepped in to help. Dan remained involved until his passing in 2012.

In 2017, Chris and Mary Beth Branson, owners of Carlisle-Branson Funeral Service & Crematory, acquired the funeral home, sharing the O'Riley family's commitment to faith and service. They modernized the facility and enhanced offerings while preserving its welcoming, family-centered atmosphere.

Today, Shawn and Chris continue to serve families with dedication, upholding the legacy that began with Dan O'Riley more than 50 years ago.

6107 South East Street • Indianapolis, IN 46227
[\(317\) 787-8224](tel:(317)787-8224)

ORileyBranson.com